

# FINISHES 2024



CASTRO



BRASS

---

3

TEXTURES & CHAINS

---

3

MARBLE

---

4

WOOD, GLASS, LACQUERED  
& ELECTRIC WIRES

---

5 - 6

CRYSTALS

---

7

UPHOLSTERY FABRICS

---

8 - 50

CUSTOMIZATION

---

51 - 52

LAMPSHADE FABRICS

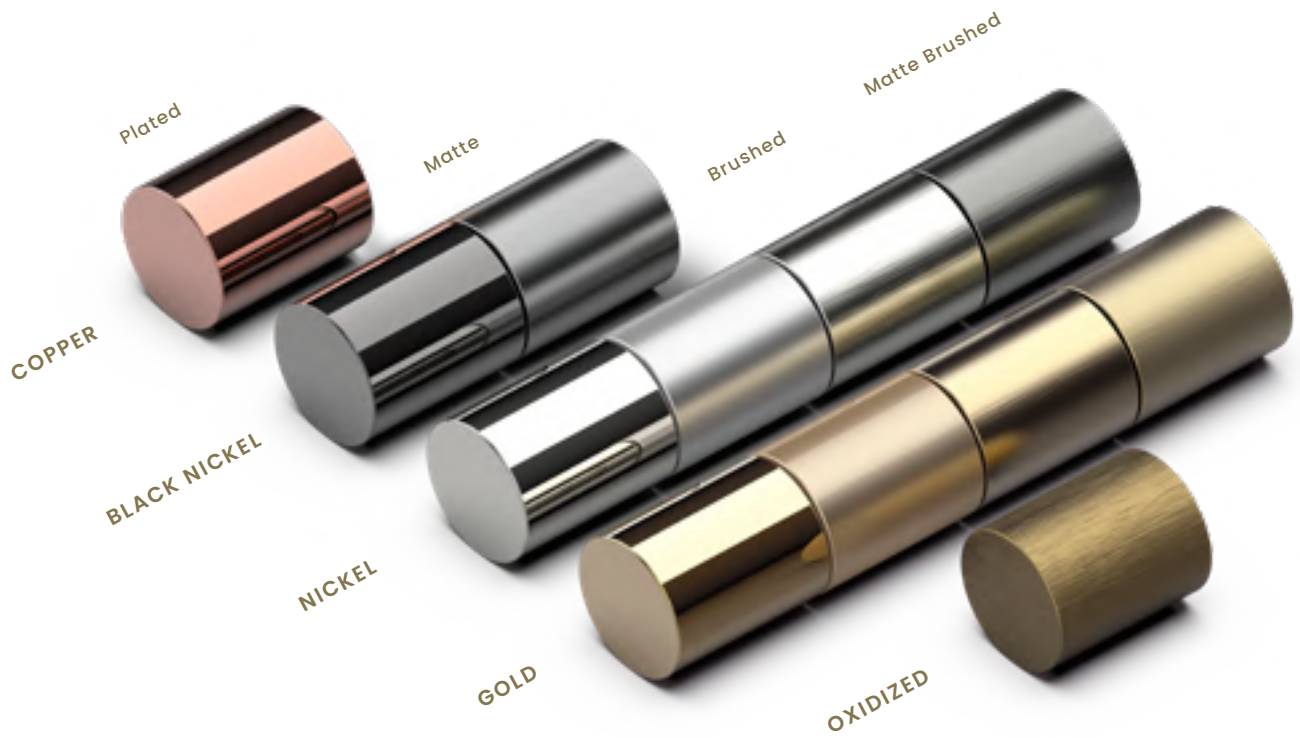
---

53 - 55



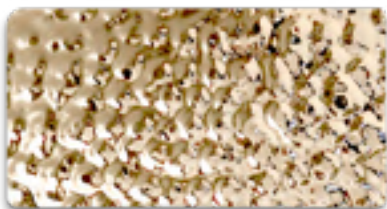
# FINISHES

## Metal Finishes

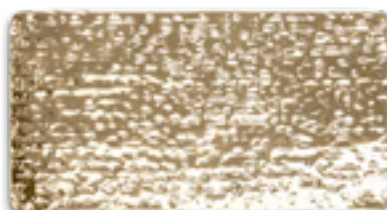


THE IMAGES USED IN THIS CATALOGUE ARE PURELY FIGURATIVE AND THE FINISHES OF THE PIECES MAY BE DIFFERENT. THEREFORE, WE ENCOURAGE YOU TO CHECK IT WITH YOUR BUSINESS DEVELOPMENT MANAGER.

## Textures

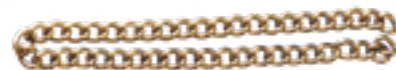


Hammered

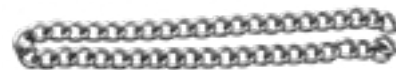


Canyon Hammered

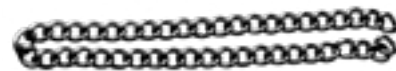
## Chain Finishes



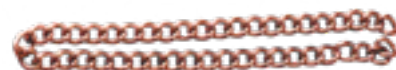
Gold



Nickel



Black Nickel

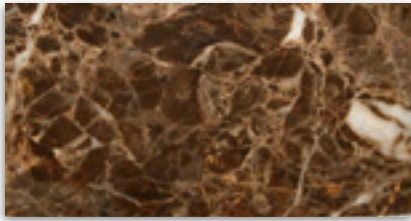


Copper



## FINISHES

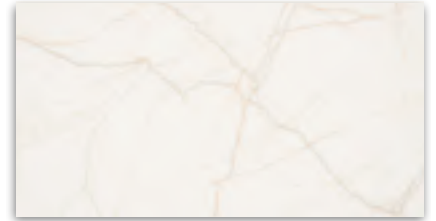
### Marble Options



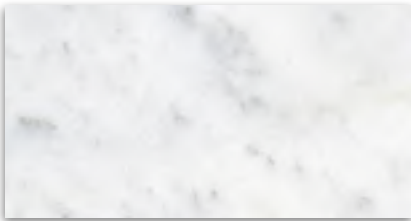
Emperador



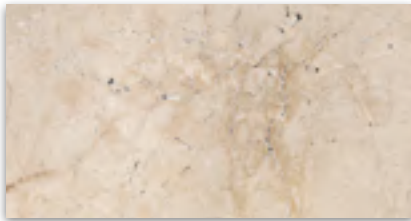
Marquina



Estremoz



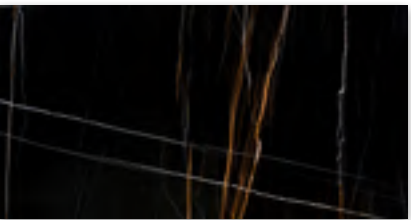
Carrara



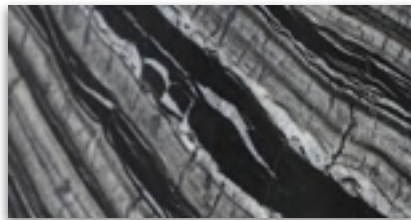
Travertino



Guatemala



Sahara Noir\*



Kenya Black

\*The price of Sahara Noir exhibits a distinct variation when compared to other marbles, and its current price is available upon request.



# FINISHES

## Wood Options

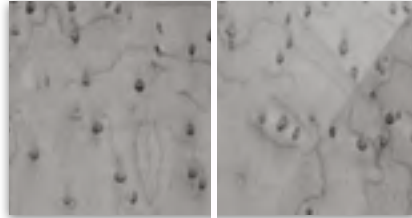
Bird Eyes Root



Matte

Glossy

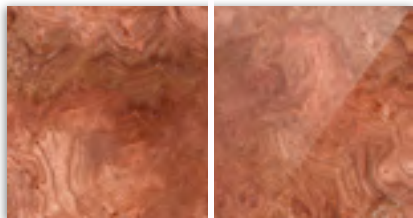
Bird Eyes Smoked



Matte

Glossy

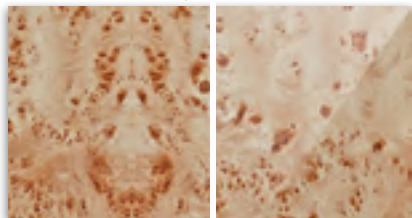
Walnut Root



Matte

Glossy

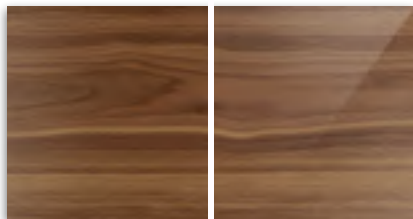
Poplar Root



Matte

Glossy

Walnut



Matte

Glossy

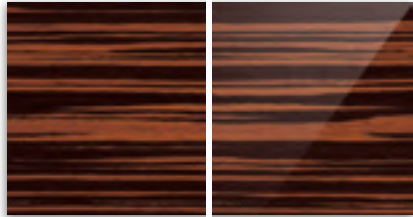
Eucalyptus Frisé



Matte

Glossy

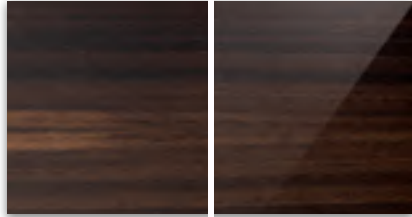
Ebony



Matte

Glossy

Eucalyptus



Matte

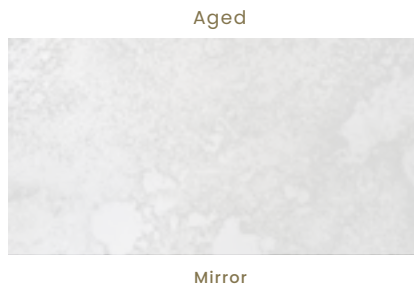
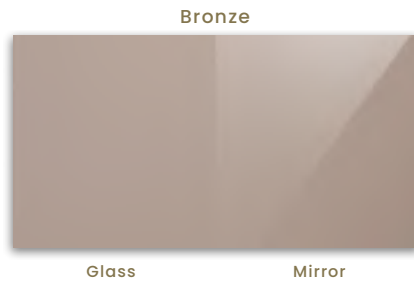
Glossy

Other types of wood can be available under request and consultation.



## FINISHES

### Glass/ Mirror Options



### Lacquered MDF Colors



### Electric Wires



Gold



Black



Grey



Transparent



Fabric White



Fabric Black

Lacquered Designs' colors can be customized according to the [RAL COLOR chart](#).



# CRYSTALS

## Partnership with Asfour

### Crystal Coating



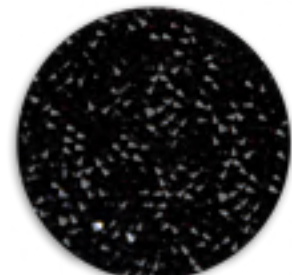
### Crystal Rocks



012 001 METSI



012 280 NUT



012 280



UPHOLSTERY

# FABRICS





CASTRO INTERIORS FABRIC AND LEATHER  
COLLECTION BOOK - AVAILABLE TO ORDER.



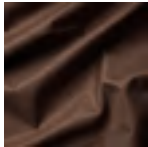
# UPHOLSTERY FABRICS

## DECORATIVE FABRICS

### CLASS A



Paris



Liverpool

### CLASS B



Ascot



Velvety & Rocky



Project & Project Form

### CLASS C

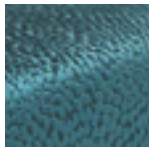


Mitter



Mirage

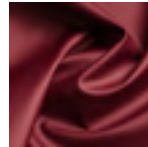
### CLASS D



Vegas

## SYNTHETIC & NATURAL LEATHER

### CLASS A



Omega

### CLASS B



Glow & Texture



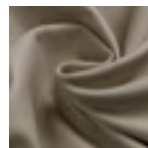
Chanel & Chanel Premium

### CLASS C



Oxidom & Oxidom Premium

### CLASS D



Linea Laguna (natural leather)

## CUSTOMIZATION

### CLASS COM

Customer Fabric

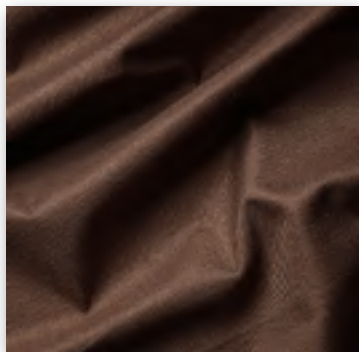
UPHOLSTERY FABRICS

# CLASS A

**DECORATIVE  
FABRICS**



PARIS



LIVERPOOL

**SYNTHETIC &  
NATURAL LEATHER**



OMEGA



## UPHOLSTERY FABRICS

### Class A

Velvet

### PARIS FR

#### TECHNICAL INFORMATION

COMPOSITION: 100% PL  
WIDTH: 140CM  
MARTINDALE: +80.000  
FLAME RESISTANCE: CIGARETTE  
LIGHT RESISTANCE: 5  
PILLING: 3

#### DESCRIPTION

*The rational choice for a robust velvet which is perfectly suitable for contract and hospitality. With an excellent feel and martindale it has a very interesting selection of available colors.*



BRICK



SEDERE CHAIR



ANNA CHAIR

## CUSTOMIZATION OPTIONS



## UPHOLSTERY FABRICS

### Class A

Velvet

---

### PARIS FR



COLOR - MOUSE

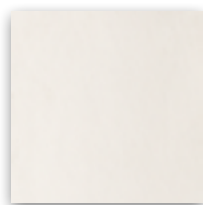


# UPHOLSTERY FABRICS

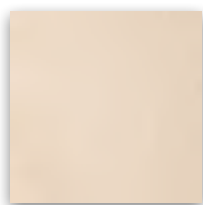
## Class A

Velvet

### PARIS FR



Cream



Beige



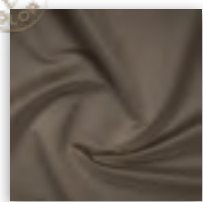
Champagne



Lion



Khaki



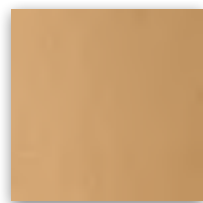
Elephant



Mouse



Chocolate



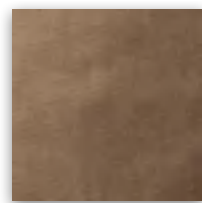
Camel



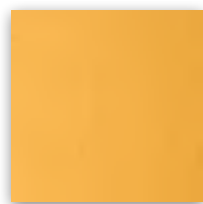
Teja



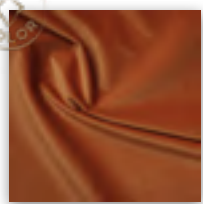
Cuio



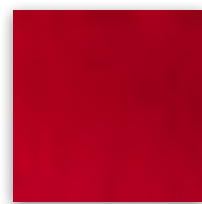
Taupe



Mostaza



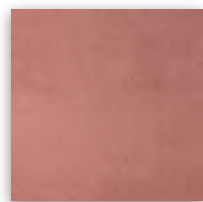
Brick



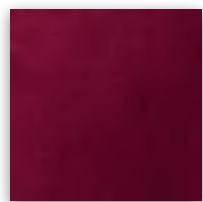
Deep Red



Red Rose



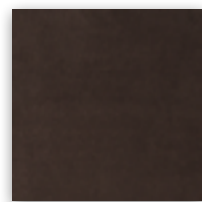
Salmon



Wine



Bordeaux



Ebony



# UPHOLSTERY FABRICS

## Class A

Velvet

### PARIS FR



Pink



Violet



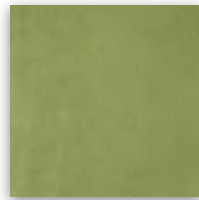
Lavanda



Purple



Mud



Lima



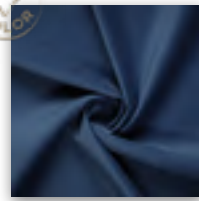
Forest



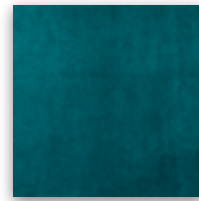
Green



Turquoise



Ocean



Petrol



Dark Blue



Light Blue



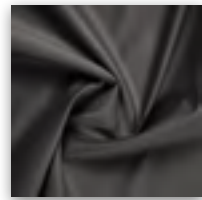
Light Grey



Safira



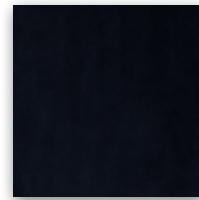
Steel



Anthracite



Lilac



Deep Blue



Black





## UPHOLSTERY FABRICS

### Class A

#### Weaved Fabric

### LIVERPOOL

FR

#### TECHNICAL INFORMATION

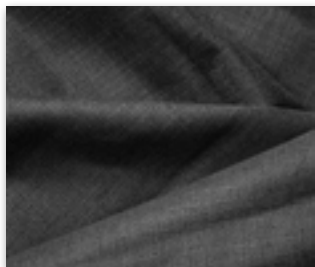
**COMPOSITION:** 100% PL  
**WIDTH:** 140CM  
**MARTINDALE:** +100.000  
**FLAME RESISTANCE:** CIGARETTE  
**LIGHT RESISTANCE:** 5  
**PILLING:** 3

#### DESCRIPTION

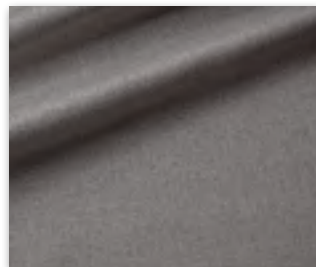
*Inspired by classic tweed with a bouclé effect, this magnificent upholstery fabric is available in 14 stunning colors. The bouclé effect is given by the textured acrylic yarn. What makes this fabric so interesting, in addition to its fabulous appearance, is the fact that the colors are extremely resistant.*



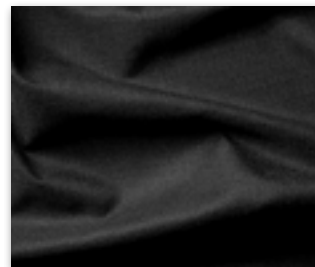
Chocolate



Antracite



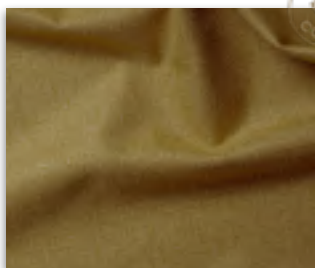
Ash



Black



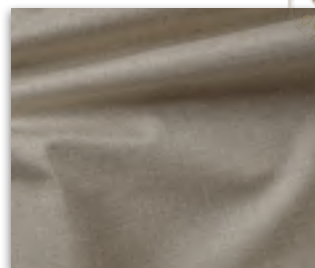
Camel



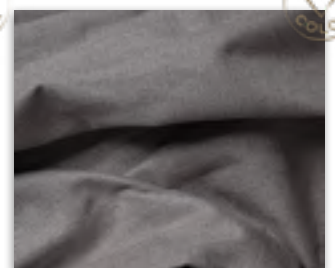
Yellow



Citric



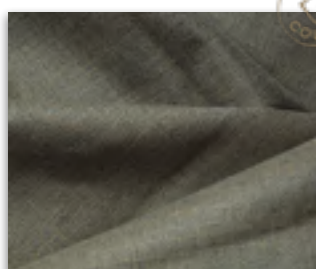
Cream



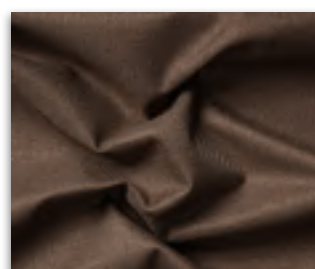
Taupe



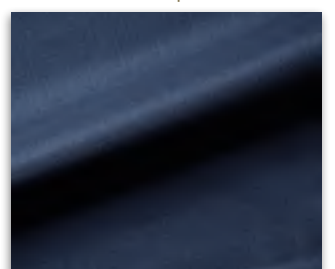
Pearl



Khaki



Moka



Ocean





## UPHOLSTERY FABRICS

### Class A

Synthetic Leather

## OMEGA FR

### TECHNICAL INFORMATION

COMPOSITION: 100% PU  
WIDTH: 140CM  
MARTINDALE: +500.000  
FLAME RESISTANCE: BS 5852  
(CIGARETTE & MATCH)  
HYDROLYSIS: 10 YEAR WARRANTY  
HIGH SCRATCH RESISTANT: YES

### DESCRIPTION

*The rational choice for an Eco Leather which is perfectly suitable for contract, hospitality, nautical and even medical purposes. Highly resistant to scratches and with a small but interesting selection of available colors.*



Omega - Color Orange



### MIA ST\* CHAIR

\*See Through



# UPHOLSTERY FABRICS

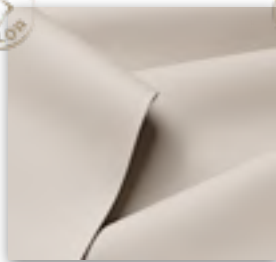
## Class A

Synthetic Leather

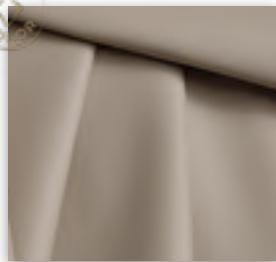
### OMEGA FR



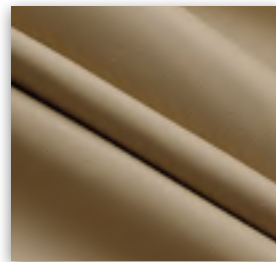
Toffee



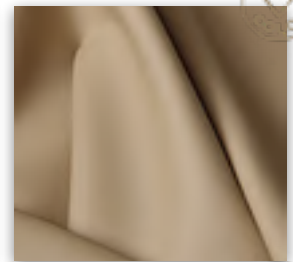
Cream



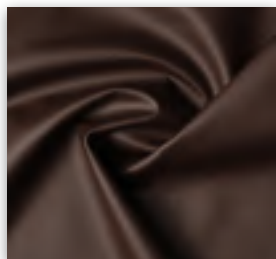
Toffee



Camel



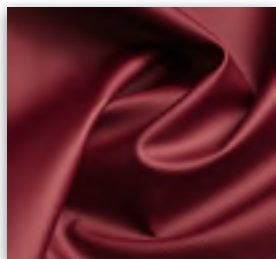
Trufa



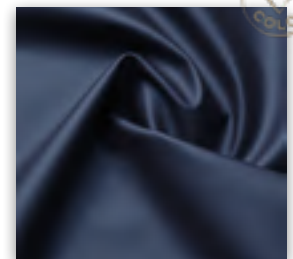
Dark Brown



Orange



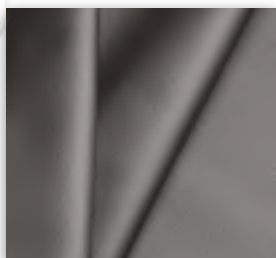
Bordeaux



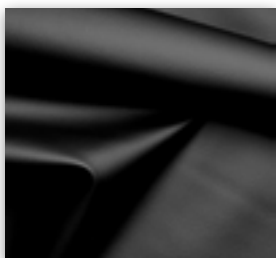
Blue



Grey



Ash



Black



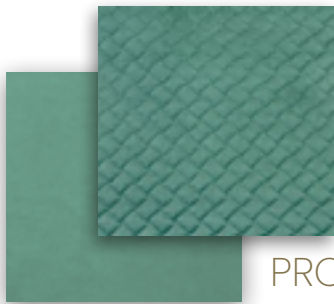
UPHOLSTERY FABRICS

# CLASS B

**DECORATIVE  
FABRICS**



ASCOT



PROJECT

PROJECT  
FORM



VELVETY

ROCKY

**SYNTHETIC &  
NATURAL LEATHER**



GLOW

TEXTURE



CHANEL

CHANEL  
PREMIUM



## UPHOLSTERY FABRICS

### Class B

#### Tweed Fabric

### ASCOT

FR

#### TECHNICAL INFORMATION

**COMPOSITION:** 95% PL + 5% PC  
**WIDTH:** 140CM  
**MARTINDALE:** +80.000  
**FLAME RESISTANCE:** CIGARETTE  
**LIGHT RESISTANCE:** 4  
**PILLING:** 4

#### DESCRIPTION

*Inspired by classic tweed with a bouclé effect, this magnificent upholstery fabric is available in 14 stunning colors. The bouclé effect is given by the textured acrylic yarn. What makes this fabric so interesting, in addition to its fabulous appearance, is the fact that the colors are extremely resistant.*



Color - Mostaza



GRACE STOOL

PENELOPE CHAIR

Color - Nata





# UPHOLSTERY FABRICS

## Class B

### Tweed Fabric

## ASCOT

FR



Nata



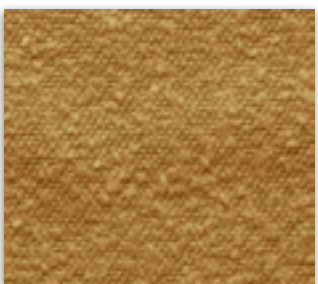
Pearl



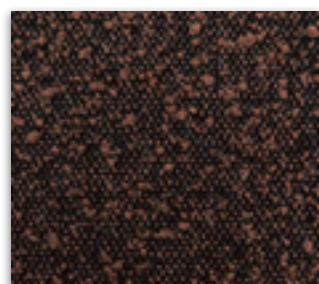
Pink



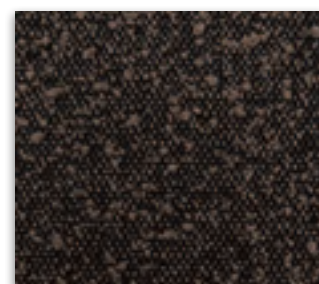
Champagne



Mostaza



Brick



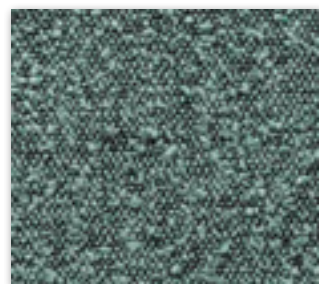
Mouse



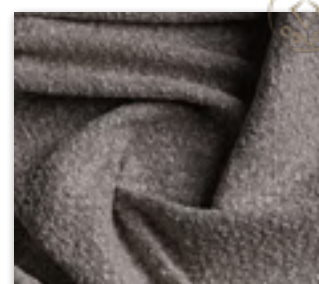
Olive green



Atlantic



Safira



Toffee



Taupe



Graphite



Black



## UPHOLSTERY FABRICS

### Class B

Padded Velvet

## PROJECT & PROJECT FORM

FR  
WATER REPELLENT  
STAIN RESISTANT

Project **Form** Ash Gray - Color 08

### TECHNICAL INFORMATION

COMPOSITION: 100% PL  
WIDTH: 140CM  
MARTINDALE: +50.000  
FLAME RESISTANCE: BS 5852  
(CIGARETTE & MATCH)  
CRIB 5 - OPTIONAL  
LIGHT RESISTANCE: 4  
PILLING: 4

### DESCRIPTION

*Project Form is a Water repellent, Anti-stain and Easy cleaning velvet. Allied to these fantastic properties is its enormous smoothness and high resistance to abrasion with more than 50.000 cycles of Martindale! Project Form is the quilted version from Project Water Repellent. CRIB 5 certification is also available under request.*



Project **Form** Ash Gray - Color 08



CARLO SWIVEL ARMCHAIR

Project Ash Gray - Color 23



COLOMBO MAPLE



## UPHOLSTERY FABRICS

### Class B

Padded Velvet

### PROJECT & PROJECT FORM

FR  
WATER REPELLENT  
STAIN RESISTANT



Project - Ivory 01

Project **Form** - Ivory 01

MIA CHAIR



# UPHOLSTERY FABRICS

## Class B

Padded Velvet

### PROJECT & PROJECT FORM

FR  
WATER REPELLENT  
STAIN RESISTANT

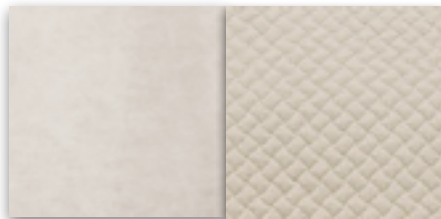
Project

Project Form



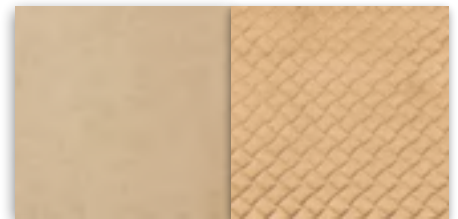
14 Lavender

15 Lavender



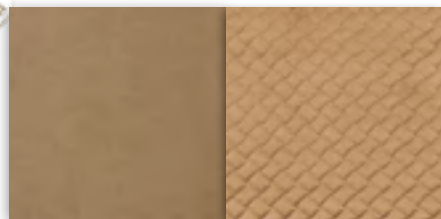
01 Ivory

01 Ivory



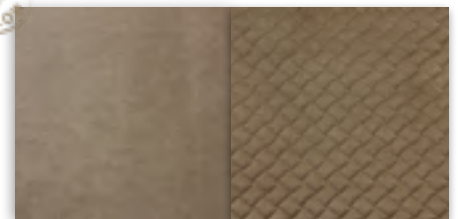
02 Sand

11 Sand



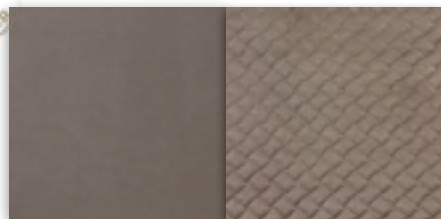
03 Beige

02 Beige



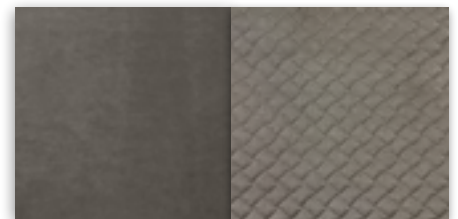
04 Taupe

03 Taupe



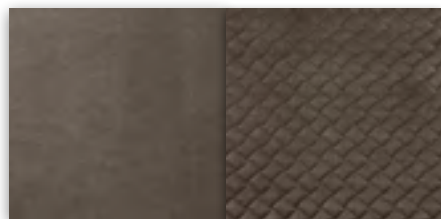
13 Light Gray

06 Light Gray



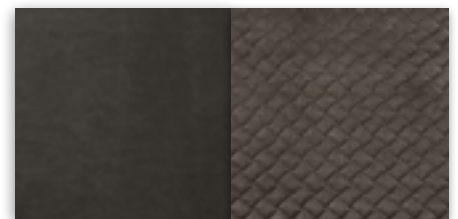
23 Ash Gray

08 Ash Gray



22 Dark Taupe

07 Dark Taupe



21 Steel Gray

09 Steel Gray

Project - Color 02 Beige







# UPHOLSTERY FABRICS

## Class B

Padded Velvet

### PROJECT & PROJECT FORM

FR  
WATER REPELLENT  
STAIN RESISTANT

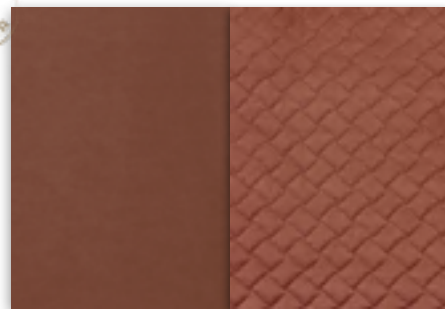
Project

Project Form



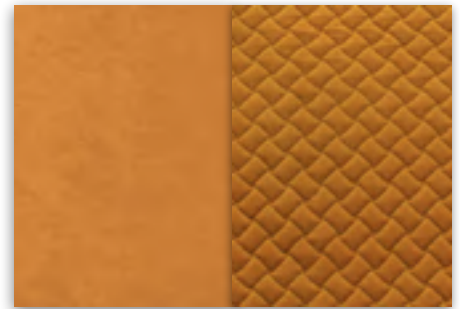
07 Pure Yellow

12 Pure Yellow



15 Ash Rose

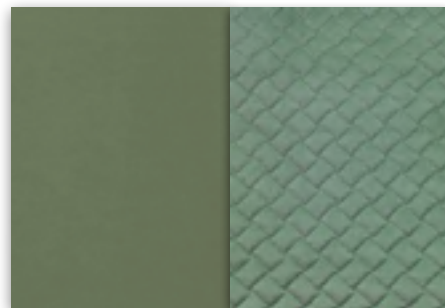
10 Ash Rose



06 Curry

13 Curry

Project FORM - Color 11 Sand



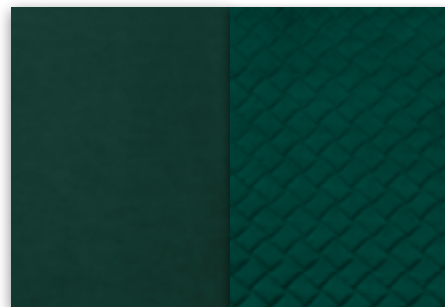
11 Aqua Marine

05 Aqua Marine



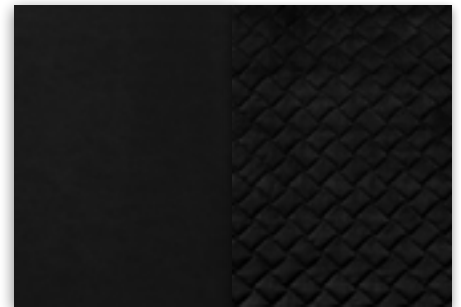
12 Capri Blue

14 Capri Blue



10 Storm Blue

04 Storm Blue



18 Black

16 Black



## UPHOLSTERY FABRICS

### Class B

Velvet

### VELVETY & ROCKY

FR (OPTIONAL)

#### TECHNICAL INFORMATION

COMPOSITION: 100% PL  
WIDTH: 140CM  
MARTINDALE: +150.000 (VELVETY)  
MARTINDALE: +84.000 (ROCKY)  
FLAME RESISTANCE: CIGARETTE & MATCH  
LIGHT RESISTANCE: 4/5  
PILLING: 5

#### DESCRIPTION

*Project Form is a Water repellent, Anti-stain and Easy cleaning velvet. Allied to these fantastic properties is its enormous smoothness and high resistance to abrasion with more than 50.000 cycles of Martindale! Project Form is the quilted version from Project Water Repellent. CRIB 5 certification is also available under request.*



ROCKY - Color 04

VELVETY - Color 02



SUSAN CHAIR



# UPHOLSTERY FABRICS

## Class B

### Velvet

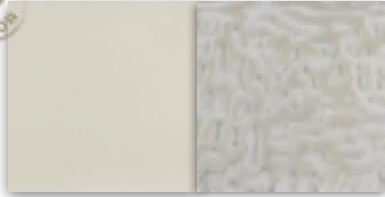
#### VELVETY & ROCKY

FR (OPTIONAL)



Velvety

Rocky

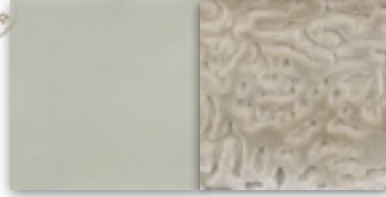


MARSHMALLOW



Velvety

Rocky

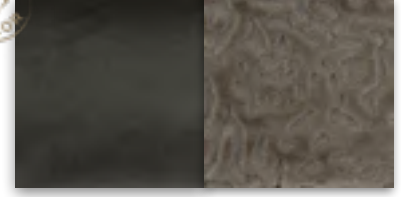


CRÈME BRÛLÉE

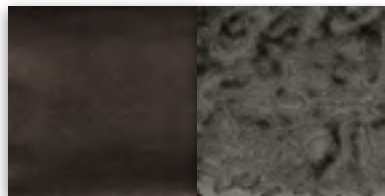


Velvety

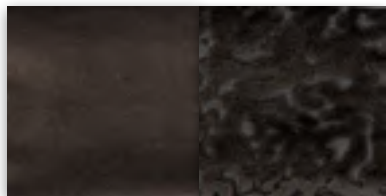
Rocky



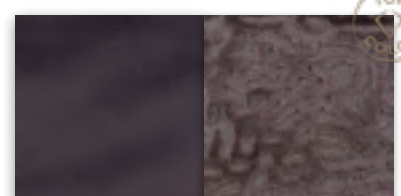
TAUPE GRAY



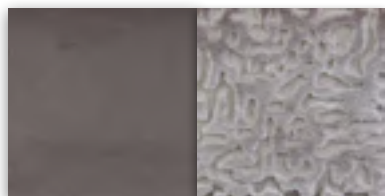
CHOCOLATE CHIP



GANACHE



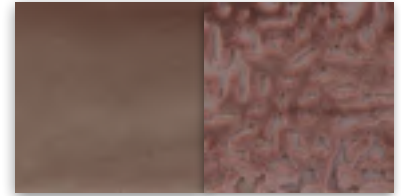
WISTFUL MAUVE



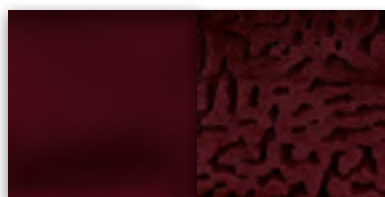
BARK



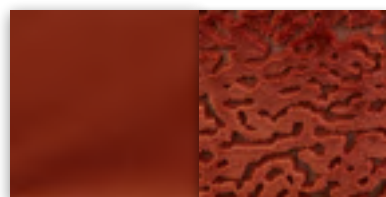
MISTY ROSE



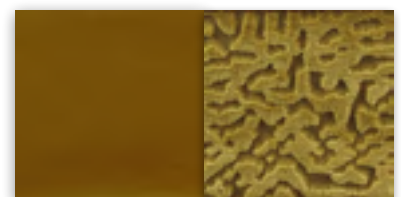
CAMEO BROWN



RUBY WINE



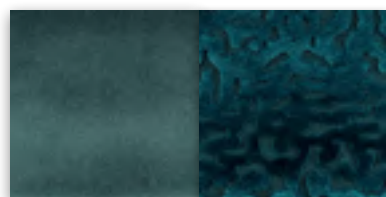
GINGER SPICE



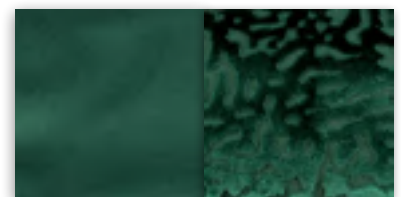
NUGGET GOLD



GOLDEN PALM



BOTANICAL GARDEN



EVERGREEN



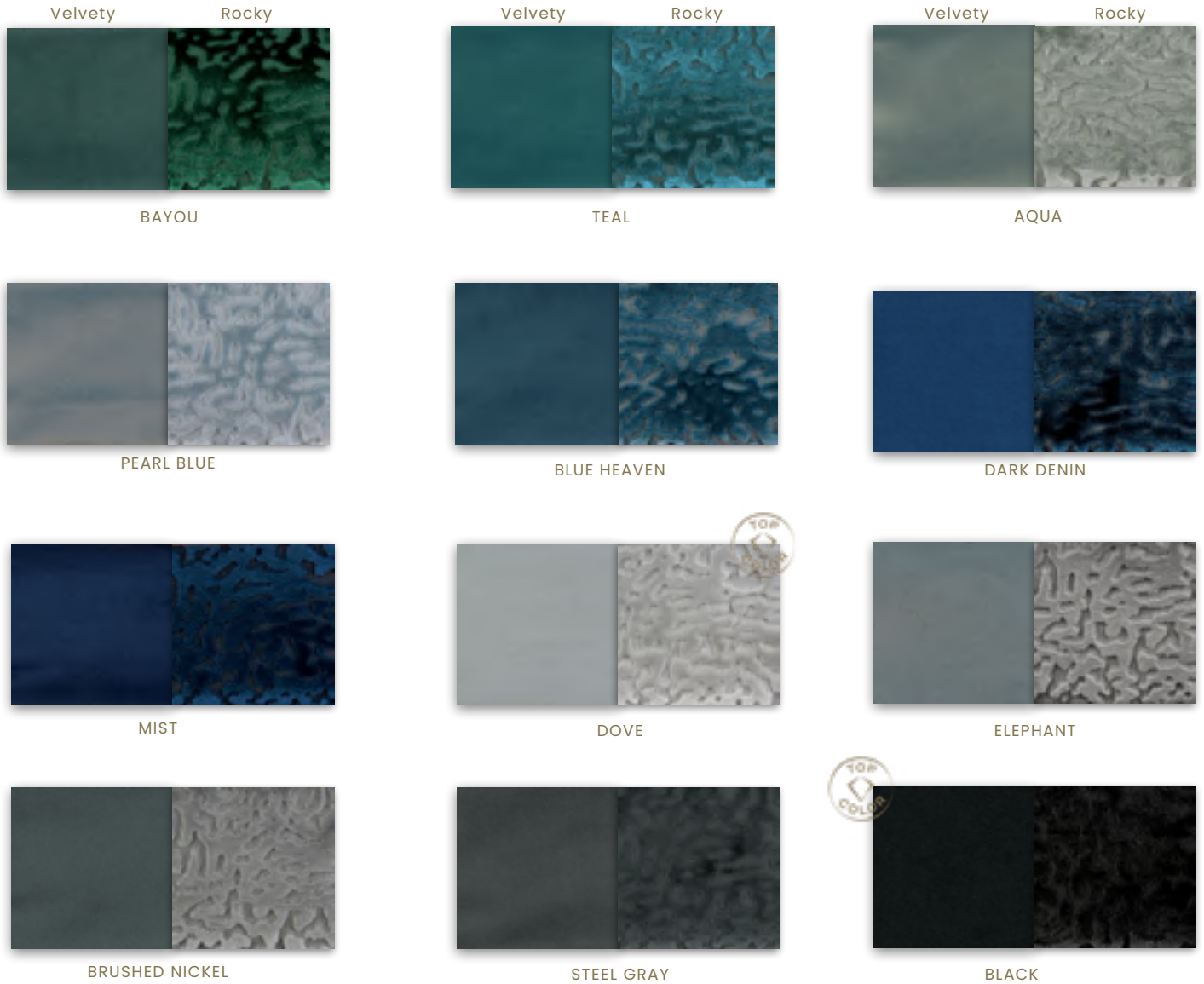
# UPHOLSTERY FABRICS

## Class B

### Velvet

## VELVETY & ROCKY

FR (OPTIONAL)



# CUSTOMIZATION OPTIONS



## UPHOLSTERY FABRICS

### Class B

Synthetic Leather

### GLOW & TEXTURE

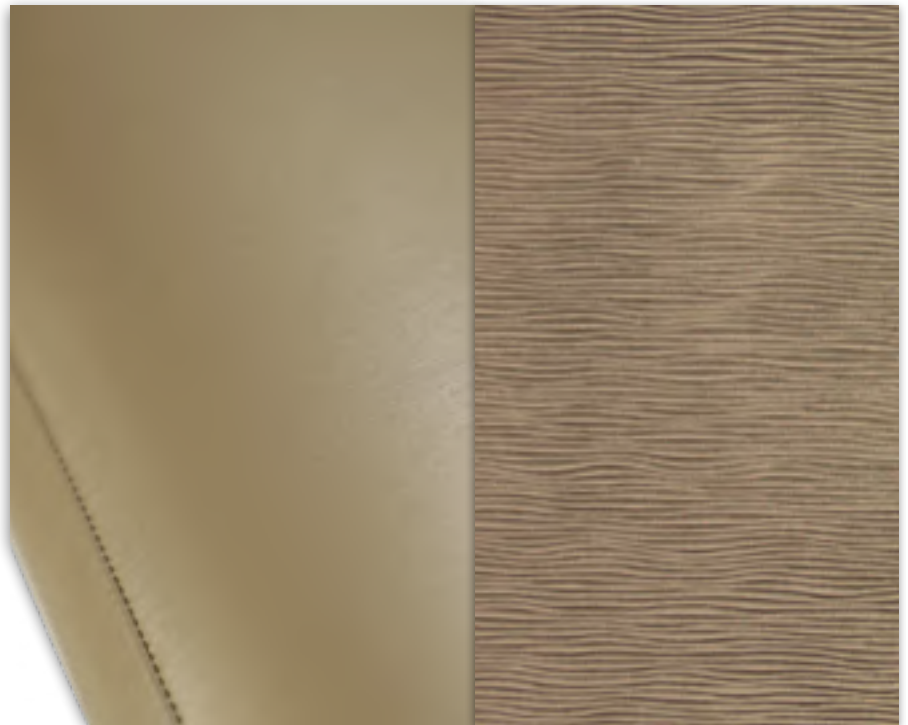
FR

#### TECHNICAL INFORMATION

COMPOSITION: 100% PU  
WIDTH: 140CM  
MARTINDALE: +200.000  
FLAME RESISTANCE: BS 5852  
(CIGARETTE & MATCH)  
CRIB 5 - OPTIONAL

#### DESCRIPTION

Smooth feeling eco-leather with a brushed metallic texture (Glow) or with light ripple waves (Texture). Available in a wide selection of beautiful earthy and pastel tones.. Mix and match Glow with Texture since it's the same base color.



Glow - Color 06

Texture - Color 01



SEDERE BAR CHAIR



ATHENA CHAIR



UPHOLSTERY FABRICS

Class B

Synthetic Leather

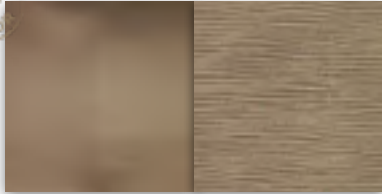
GLOW & TEXTURE

FR



Glow

Texture

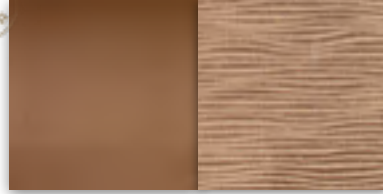


01



Glow

Texture

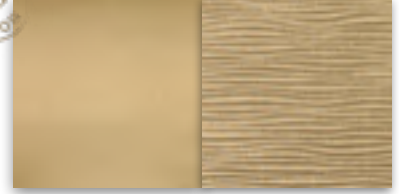


02

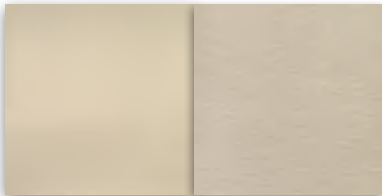


Glow

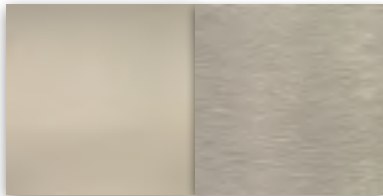
Texture



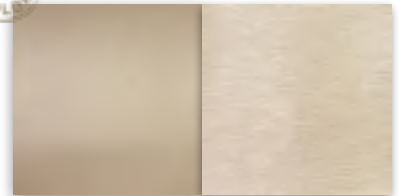
03



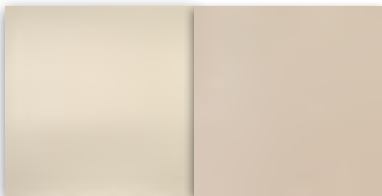
04



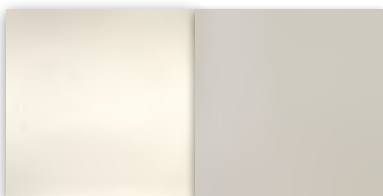
05



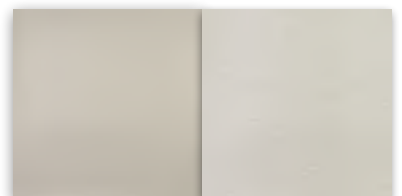
06



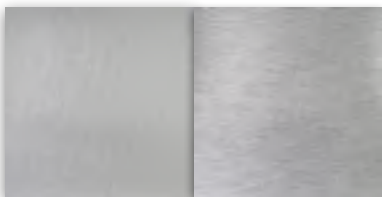
07



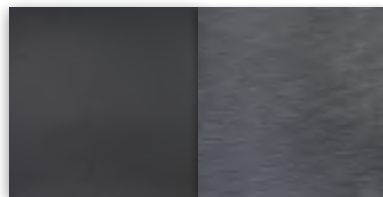
08



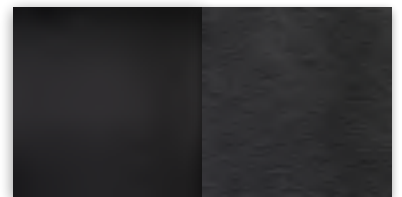
09



10



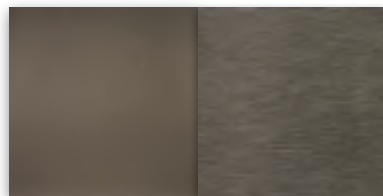
11



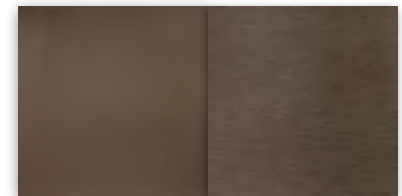
12



13



14



15



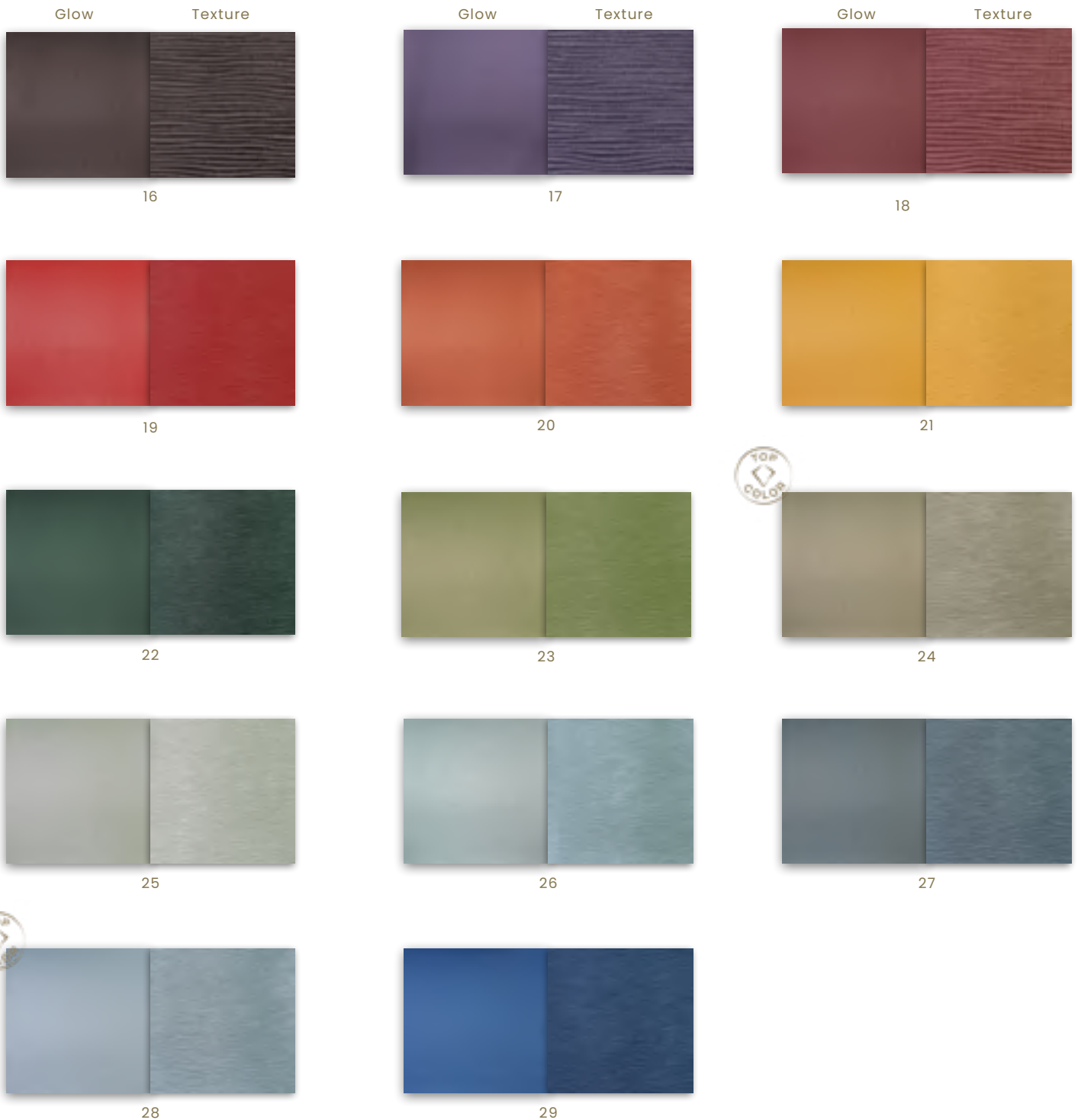
UPHOLSTERY FABRICS

Class B

Synthetic Leather

GLOW & TEXTURE

FR



## CUSTOMIZATION OPTIONS



## UPHOLSTERY FABRICS

### Class B

Synthetic padded Leather

## CHANEL & CHANEL PREMIUM

### TECHNICAL INFORMATION

COMPOSITION: 100% PU  
WIDTH: 140CM  
MARTINDALE: +200.000  
FLAME RESISTANCE: OPTIONAL  
LIGHT RESISTANCE: 4/5  
ANTI-HYDROLYSIS TEST: 10 YEARS

### DESCRIPTION

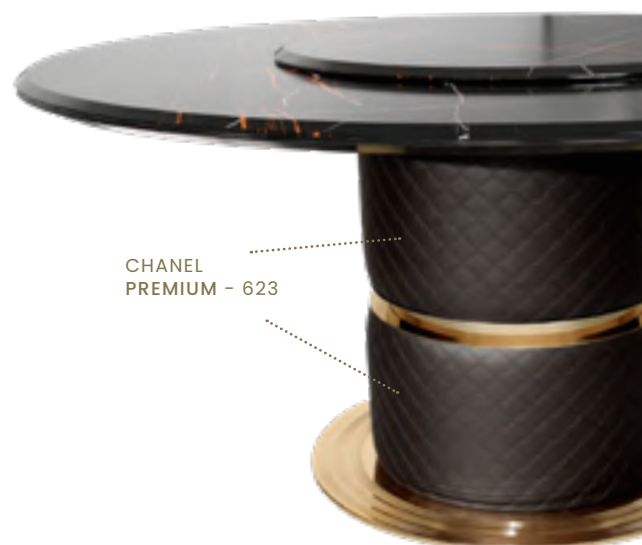
*Chanel and Chanel Premium are pure class. An astonishing product that exudes luxury with a beautiful selection of earthy tones that matches extremelly well with Castro's brass work. Its tech specs are impressive and are suitable for any use.*



CHANEL PREMIUM 604



SEDERE CHAIR



OLYMPUS DINING TABLE





# UPHOLSTERY FABRICS

## Class B

Synthetic padded Leather

### CHANEL & CHANEL PREMIUM



CHANEL 607

CHANEL PREMIUM 607



CHANEL

CHANEL PREMIUM

600



CHANEL

CHANEL PREMIUM

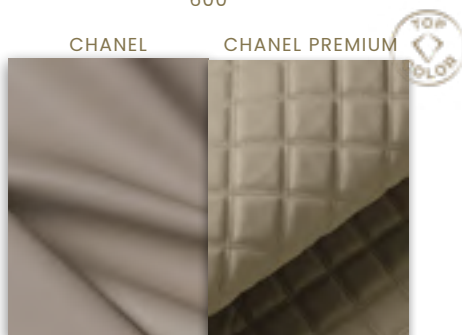
602



CHANEL

CHANEL PREMIUM

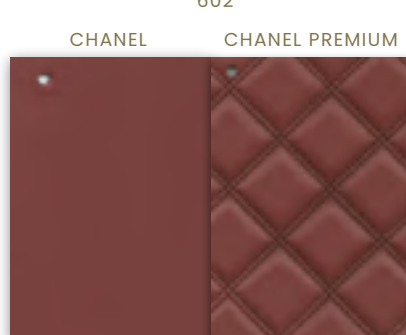
604



CHANEL

CHANEL PREMIUM

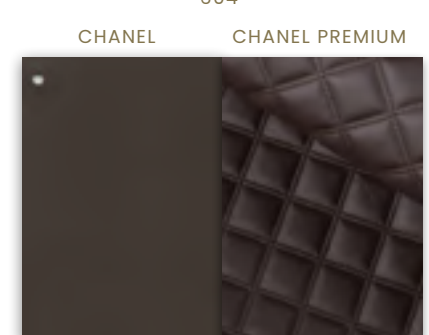
607



CHANEL

CHANEL PREMIUM

625



CHANEL

CHANEL PREMIUM

623



CHANEL

CHANEL PREMIUM

618



CHANEL

CHANEL PREMIUM

690

UPHOLSTERY FABRICS

# CLASS C

**DECORATIVE  
FABRICS**

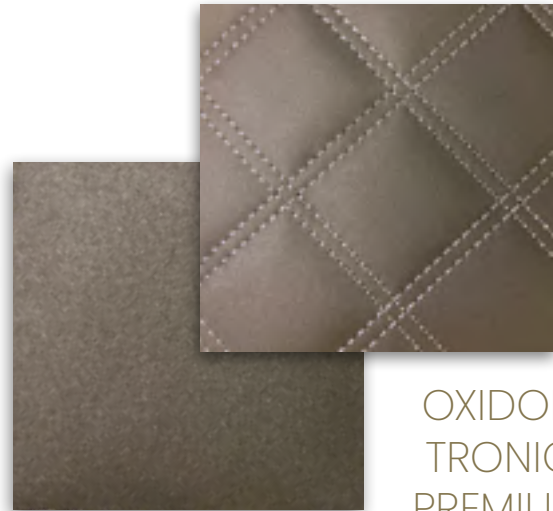


MIRAGE



MITTER

**SYNTHETIC &  
NATURAL LEATHER**



OXIDON  
TRONIC

OXIDON  
TRONIC  
PREMIUM



## UPHOLSTERY FABRICS

### Class C

Velvet

### MIRAGE FR (OPTIONAL)

#### TECHNICAL INFORMATION

COMPOSITION: 68%VI+26%CO+6%PL  
PILE: 100%VI  
WIDTH: 137/140CM  
WEIGHT:810G/ML  
MARTINDALE: 40.000

#### DESCRIPTION

*Jacquard Velvet Weave with geometric forms with a modern twist. The rich combination of colors results into a vibrant and dynamic velvet.*



MARIE CHAIR  
SAFARI EDITION

MARIE BAR CHAIR





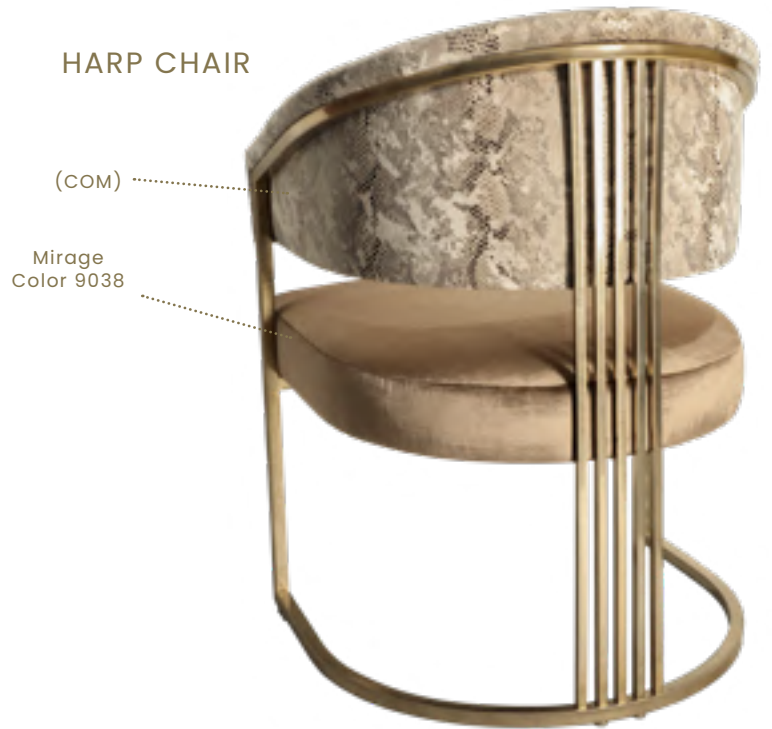
# UPHOLSTERY FABRICS

## Class C

Velvet

### MIRAGE FR

HARP CHAIR



HARP CHAIR

GRACE STOOL





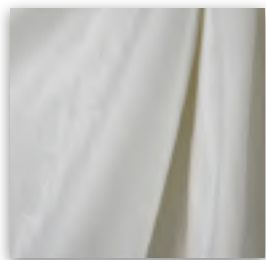
# UPHOLSTERY FABRICS

## Class C

Velvet

### MIRAGE

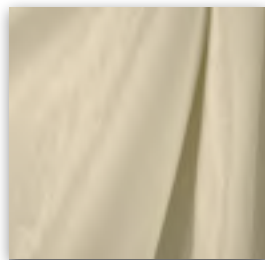
FR



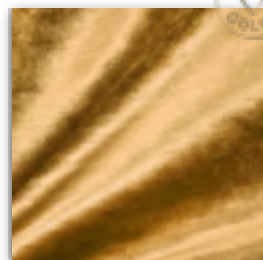
001



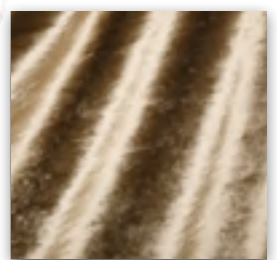
56



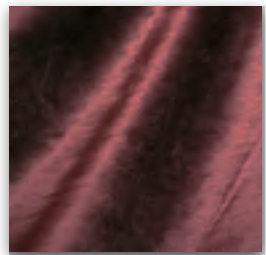
0099



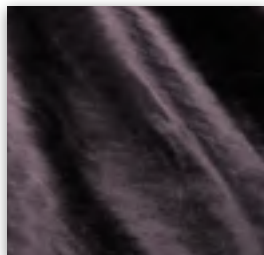
0186



483



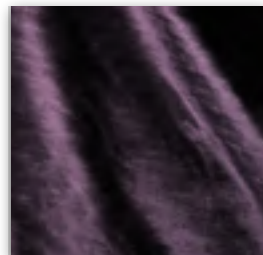
348



526



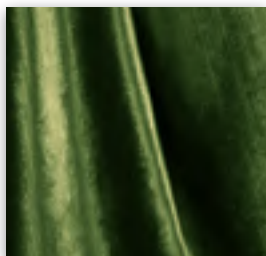
528



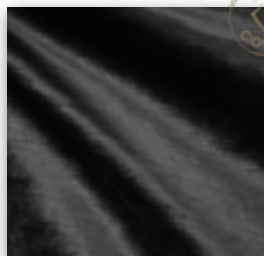
549



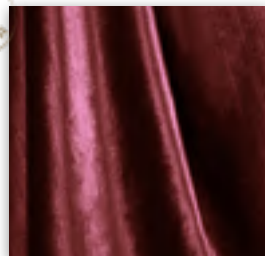
4064



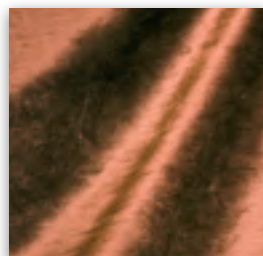
790



956



3066



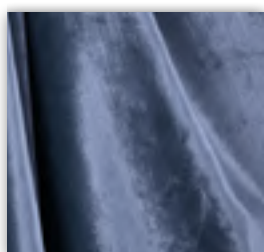
4051



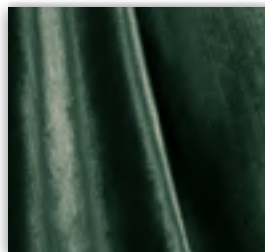
4063



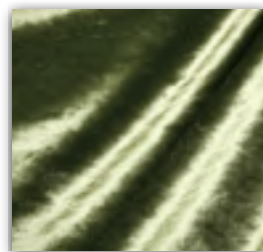
642



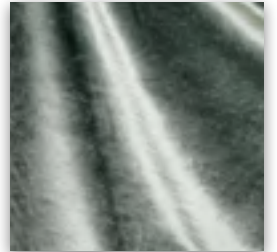
6058



6059



7060



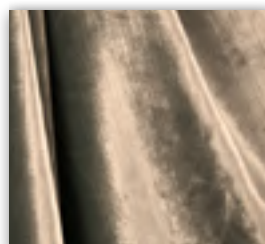
8006



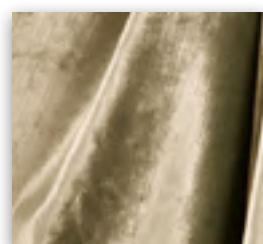
8010



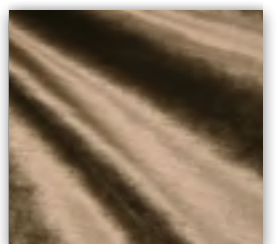
9020



9036



9037



9038

## CUSTOMIZATION OPTIONS



## UPHOLSTERY FABRICS

### Class C

#### Jacquard Velvet

### MITER

FR (OPTIONAL)

#### TECHNICAL INFORMATION

COMPOSITION: 17% PL + 63% VI + 20%

CO

WIDTH: 140CM

MARTINDALE: +25.000

FLAME RESISTANCE: BS 5852 (OPTIONAL)

#### DESCRIPTION

*Jacquard velvet with geometric design, where the geometry is the frame, with martindale 25.000 CC and a width of 140 cm.*

*Available in 7 colors that coordinate perfectly with the colors of this collection.*



Color - 02 Greige



MARIE CHAIR



# UPHOLSTERY FABRICS

## Class C

Jacquard Velvet

**MITER**  
FR (OPTIONAL)



03 Taupe



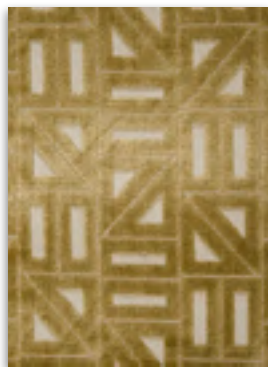
02 Greige



05 Stone



01 White Bone



04 Golden Yellow



07 Marsala



06 Baltic Blue

## CUSTOMIZATION OPTIONS



## UPHOLSTERY FABRICS

### Class C

Synthetic padded Leather

## OXIDOM & OXIDOM PREMIUM

FR

### TECHNICAL INFORMATION

**COMPOSITION:** 100% PU  
**WIDTH:** 140CM  
**MARTINDALE:** +200.000  
**FLAME RESISTANCE:** CRIB 5  
**LIGHT RESISTANCE:** 4/5  
**ANTI-HYDROLYSIS TEST:** 10 YEARS

### DESCRIPTION

*Oxidom and Oxidom Premium is pure class.  
An astonishing product that exudes luxury with a beautiful selection of earthy tones with a sparkling twist.  
Try it to feel it's smoothness are impressive.  
Its tech specs are impressive and are suitable for any use.  
CRIB 5 as a standard in both versions.*



OXIDOM LECTRO

CHANEL 619

OXIDOM TRONIC

OXIDOM TRONIC PREMIUM

OXIDOM LECTRO PREMIUM



MARIE SOFA



SEDERE ARMCHAIR





## UPHOLSTERY FABRICS

### Class C

Synthetic padded Leather

---

## OXIDOM & OXIDOM PREMIUM

FR



OXIDOM TRONIC PREMIUM

OXIDOM TRONIC



OXIDOM LECTRO PREMIUM

OXIDOM LECTRO



# UPHOLSTERY FABRICS

## Class C

Synthetic Leather

### OXIDOM & OXIDOM PREMIUM

OXIDOM LECTRO

OXIDOM LECTRO PREMIUM



Lectro

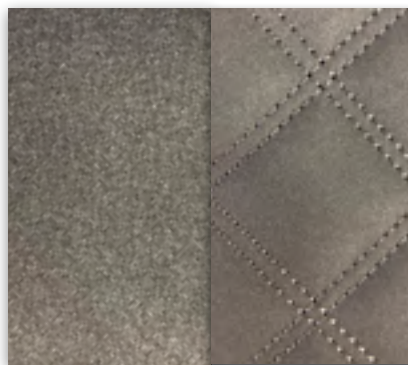
OXIDOM  
ICE

OXIDOM ICE  
PREMIUM



OXIDOM  
GREY

OXIDOM GREY  
PREMIUM



OXIDOM  
TRONIC

OXIDOM TRONIC  
PREMIUM



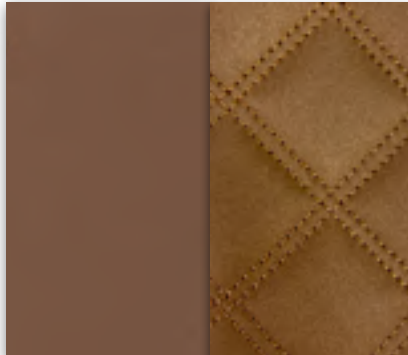
OXIDOM  
LECTRO

OXIDOM LECTRO  
PREMIUM



OXIDOM  
ROCA

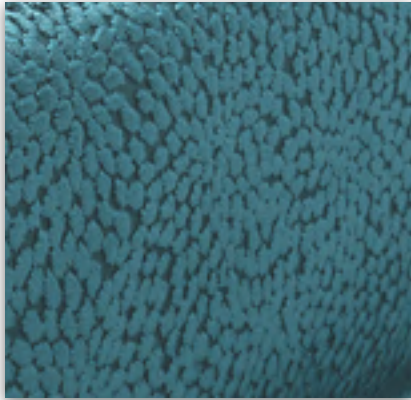
OXIDOM ROCA  
PREMIUM



## UPHOLSTERY OPTIONS

# CLASS D

### DECORATIVE FABRICS



VEGAS

### SYNTHETIC & NATURAL LEATHER



LAGUNA LINEA\*

#### \*LEATHER

Leather hides used for upholstering furniture will exhibit non-uniform surface qualities, depending on the area of the hide from which they were cut. Even pigment-dyed buffed and embossed leather obscure some of these natural texture characteristics. Variations in texture are not flaws and will not affect the leather's durability. Common surface variations include scratches, wrinkles and healed scars. A sample should never be considered as an exact snapshot of the entire hide. A dye variation along with variation in texture can be found throughout the hide of some leathers, resulting in large grain near the edge and smaller grain in the center.



## UPHOLSTERY FABRICS

### Class D

#### Velvet

### VEGAS

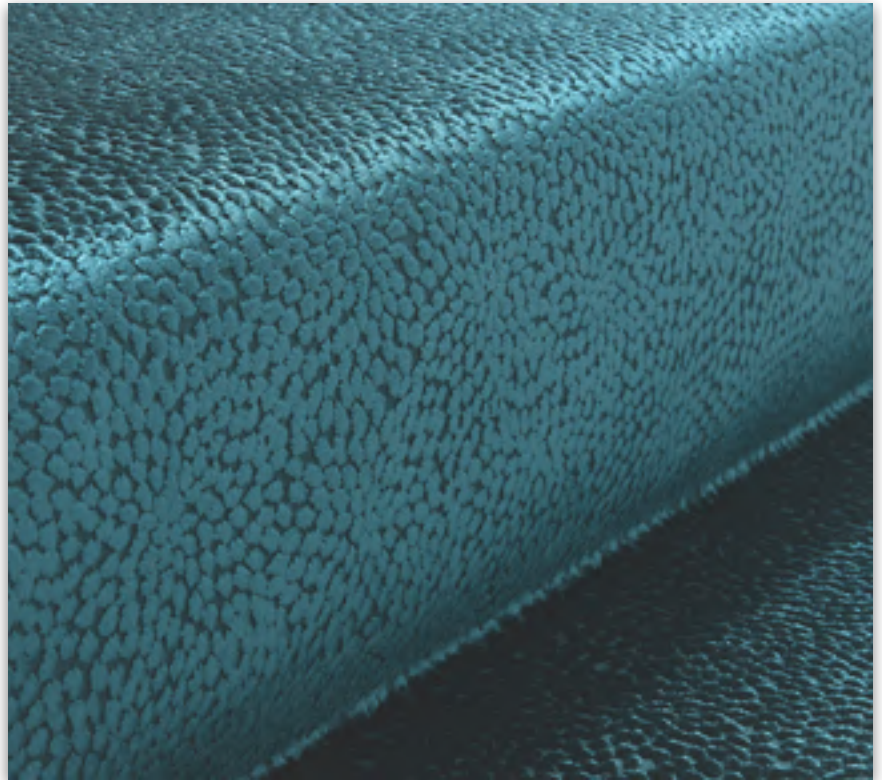
FR (OPTIONAL)  
EASY CLEAN

#### TECHNICAL INFORMATION

COMPOSITION: 100% PL  
WIDTH: 140CM  
MARTINDALE: +40.000  
FLAME RESISTANCE: BS5852 (OPTIONAL)  
ORIGIN: SWITZERLAND

#### DESCRIPTION

*The easy-care VEGAS velvet jacquard is one of the most technically demanding upholstery and drapery fabrics. The flexible, all-over design takes effect with raised polka dots that combine across the surface of the fabric to form larger shapes. They appear to shimmer, thanks to a glossy polyester yarn that reflects the light. With its uncomplicated elegance and small-scale pattern repeat, VEGAS is suitable for use in any setting.*



Vegas - Color 809

Vegas - Color 805



PENELOPE BAR CHAIR

Vegas - Color 817

PARIS - Color Champagne  
(Class A)



ANNA CHAIR



# UPHOLSTERY FABRICS

## Class D

Velvet

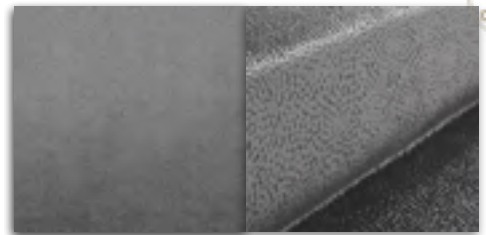
**VEGAS**  
FR (OPTIONAL)  
EASY CLEAN



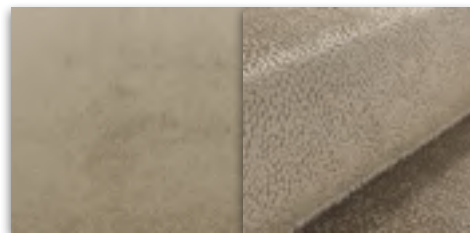
803



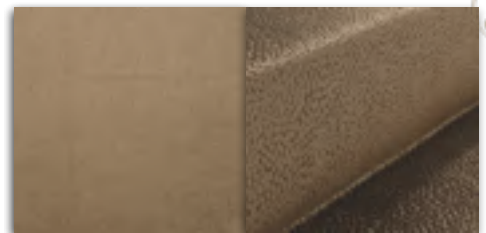
800



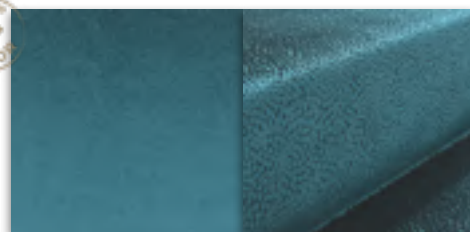
805



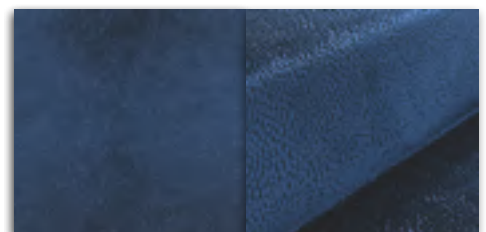
807



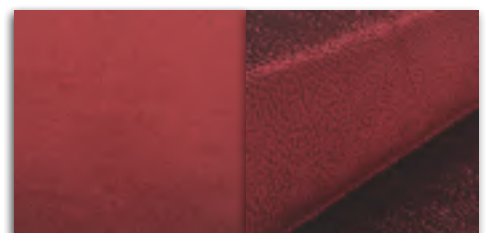
817



809



801



802





## PREMIUM UPHOLSTERY LEATHER

### Class D

Natural Leather

## LINEA LAGUNA

### TECHNICAL INFORMATION

**COMPOSITION: 100% LEATHER**  
**ORIGIN: EUROPE**  
**DIMENSIONS: 4,8/5,0M2**  
**LIGHT RESISTANCE: 5/5**  
**FLAME RESISTANCE: BS 5852**  
**(CIGARETTE & MATCH)**

### DESCRIPTION

*Bovine of european origin, corrected and embossed forenhanced grain consistency.*

*Neck creases are a normal phenomenon and do not affect the value of the leather. Neckwrinkles naturally occur in a hide as a result of the neck stretching and contracting.*



678 Old Pink

647 Sea Pearl



SEDERE BAR CHAIR

678 Old Pink

604 Sand



SUSAN STOOL



PREMIUM UPHOLSTERY LEATHER

**Class D**

Natural Leather

---

**LINEA LAGUNA**



SUSAN CHAIR



PENELOPE BAR CHAIR



CHIARA ARMCHAIR



CARLO ARMCHAIR



PREMIUM UPHOLSTERY LEATHER

Class D

Natural Leather

LINEA LAGUNA



601 Bianco Ottico



634 Gesso



635 Latte



636 Avorio



602 Vaniglia



603 Panna



639 Smoke



664 Pelle



637 Caffelatte



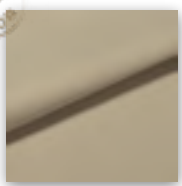
605 Crema



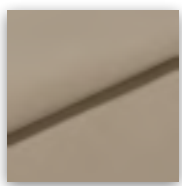
606 Cipria



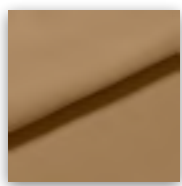
638 Siena



604 Beige



665 Marmo



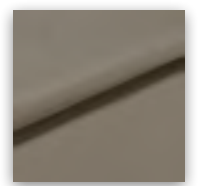
628 Sabbia



629 Stone



667 Earth



626 Grey



666 Ghiaccio



663 Chalky



647 Grigio Perla



648 Cinder



630 Acciaio



660 Asfalto



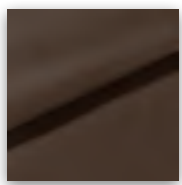
654 Pergamena



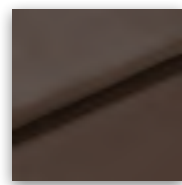
609 Wood



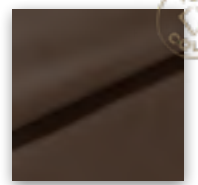
608 Marrone



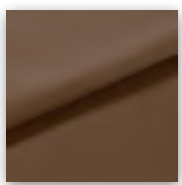
646 Moretto



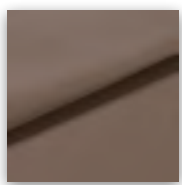
612 Castagna



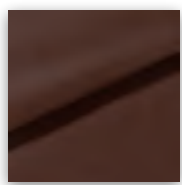
611 Testa di Moro



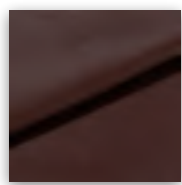
607 Nocciola



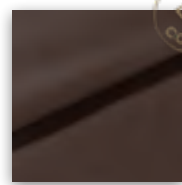
677 Malt



681 Muscat



625 Burgundy



610 Mogano





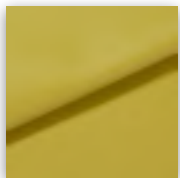


# PREMIUM UPHOLSTERY LEATHER

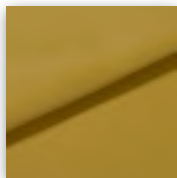
## Class D

### Natural Leather

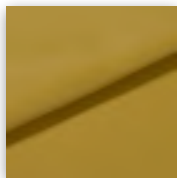
#### LINEA LAGUNA



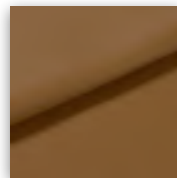
683 Sour



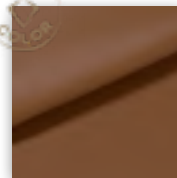
620 Giallo



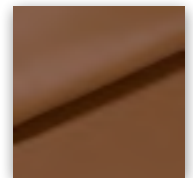
819 Giallino



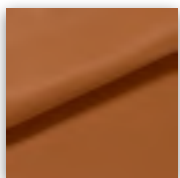
679 Miel



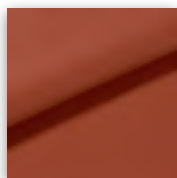
680 New Cognac



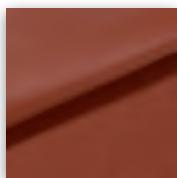
662 Fondotinta



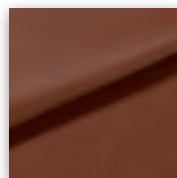
618 Arancio



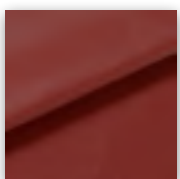
617 Begonia



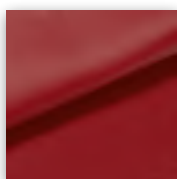
616 Antic



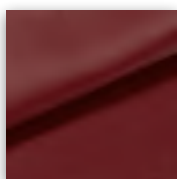
656 Cotto



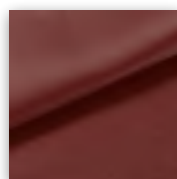
613 Mattone



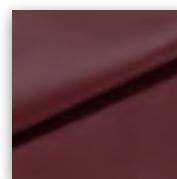
614 Rosso



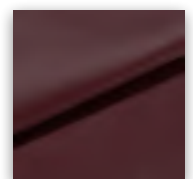
657 Rosso Antico



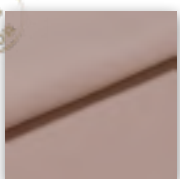
615 Bordeaux



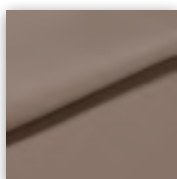
655 Amaranto



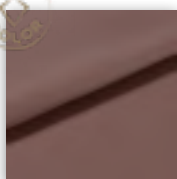
704 Extrablood



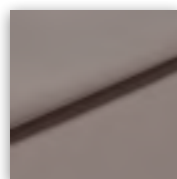
678 Confetto



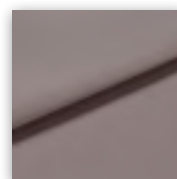
659 Tortora



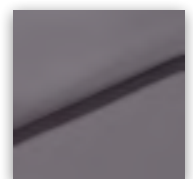
651 Rosa Antico



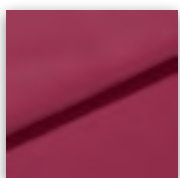
695 Ghost



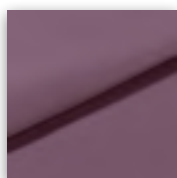
652 Ombretto



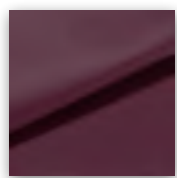
650 Lilla



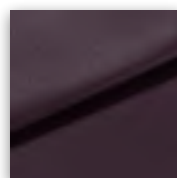
700 Fuxia



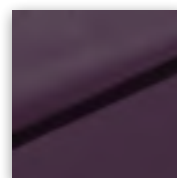
698 Orchid



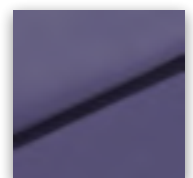
699 Cerise



696 Prugna



633 Viola



697 Persia



PREMIUM UPHOLSTERY LEATHER

Class D

Natural Leather

LINEA LAGUNA



649 Cielo



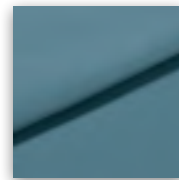
673 Iris



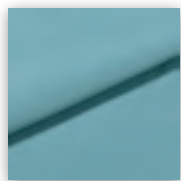
672 Misty



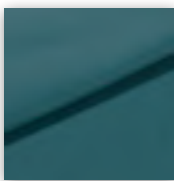
689 Lavanda



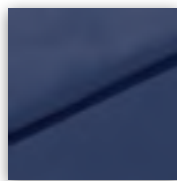
688 Piombo



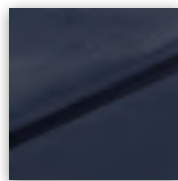
687 Sky



690 Corvette



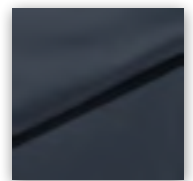
701 Electro



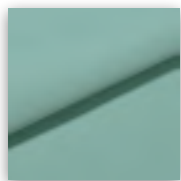
702 Dark Blue



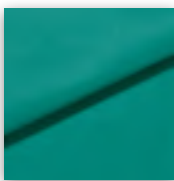
703 Ming



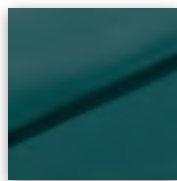
624 Azzurro



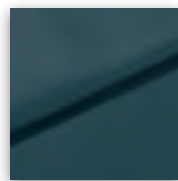
693 Acquamarina



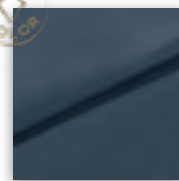
694 Modern Blue



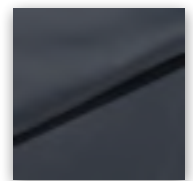
691 Midnight



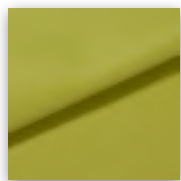
692 Colvert



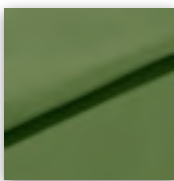
643 Avio



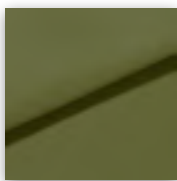
644 Notte



684 New Celery



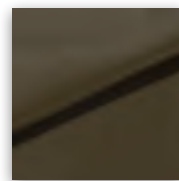
621 Verde



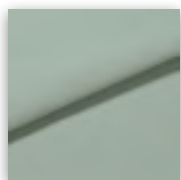
685 Aloe



631 Green



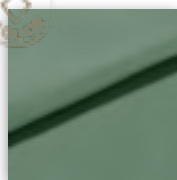
632 Verdone



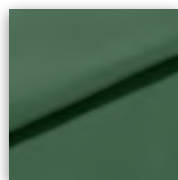
640 Mascara



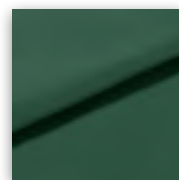
641 Lotus



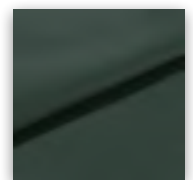
674 Octane



686 Abete



658 Foresta



653 Pino



# PREMIUM UPHOLSTERY LEATHER

## Class D

### Natural Leather

---

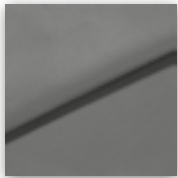
#### LINEA LAGUNA



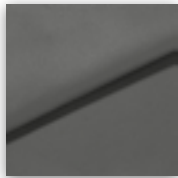
668 Frozen



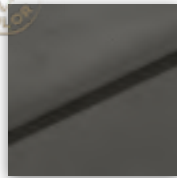
669 Cenere



671 Inox



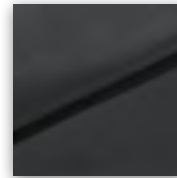
670 Highway



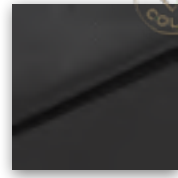
623 Grigio



675 New Grey



645 Anthracite



622 Nero

UPHOLSTERY OPTIONS

# CLASS COM



## COSTUMER OWN MATERIAL

Castro Interiors is happy to work with any fabric or leather that you desire. You can select any material from our own fabric collection or you can send your own material into our facilities. If these options are not enough, we can purchase the desired fabric from any brand – just ask for a quotation.



COSTUMER OWN MATERIAL

---

SEDERE CHAIR



HARP CHAIR



CARLO ARMCHAIR



VELVET BY:  
**DEDAR**  
MILANO



CUSTOMIZATION

# BESPOKE WORKS



## BRASS CRAFTING MASTERS

The entire production process is made in the brands' own factories in Portugal. Experienced craftsmen work to keep the tradition of brass crafting alive, being our responsibility to inspire and empower future generations to keep the tradition alive.



## BESPOKE WORKS

---

### CHALLENGE US!

We can make your product even more special simply by placing your logo or name into our creations.



We would be delighted to bring your vision to life, creating a piece tailored specifically to your desired dimensions and requirements.



Brass Letters



Personalize with your Logo



## LAMPSHADE FABRICS

### Textured Fabrics



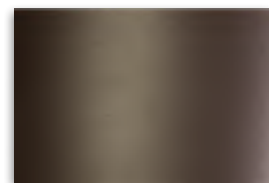
Seams of Grey



Nude



Black



Synthetic Brown

Other types of textured fabrics can be available under request and consultation.

### Organza



Black



Grey



Amber



Beige



White



Blue



Lilac



Red



Bordeaux



Green



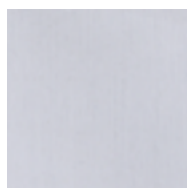


## LAMPSHADE FABRICS

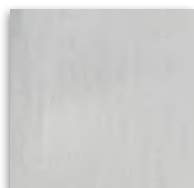
### Fabric

---

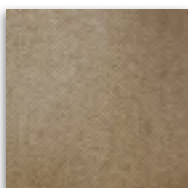
#### CHINTZ



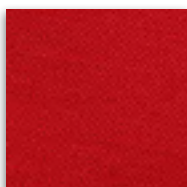
White



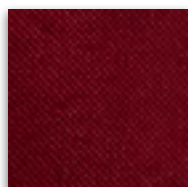
02



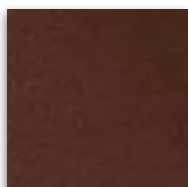
85



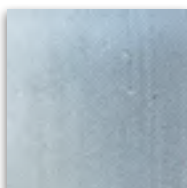
13



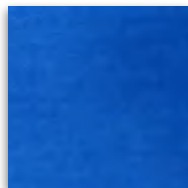
18



92



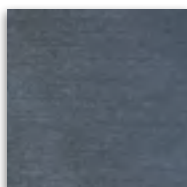
51



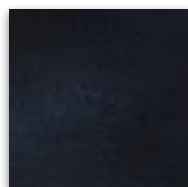
64



Purple Blue



50



Black

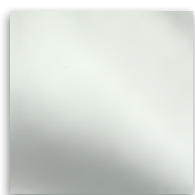


# LAMPSHADE FABRICS

## Satin

---

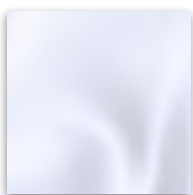
### SAFIM



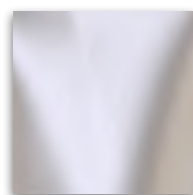
01



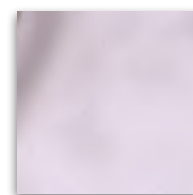
02



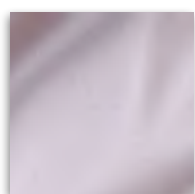
03



04



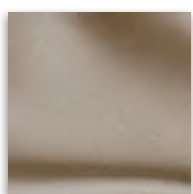
05



06



07



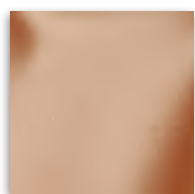
08



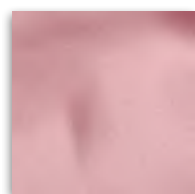
09



10



11



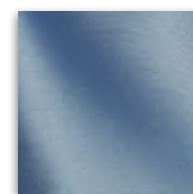
12



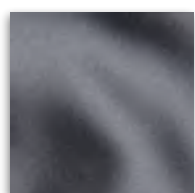
13



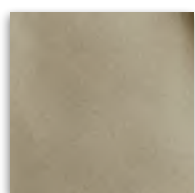
14



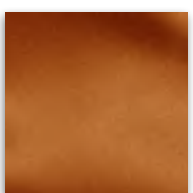
15



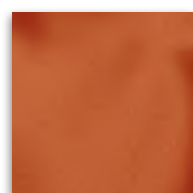
16



18



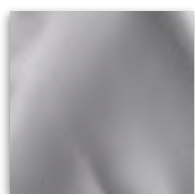
19



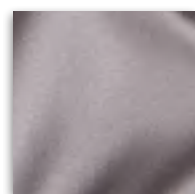
20



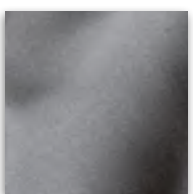
21



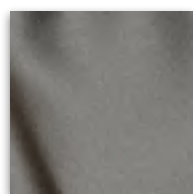
24



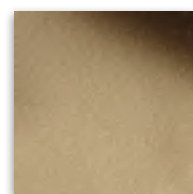
25



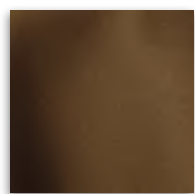
26



27



28



29



30



CASTRO